

KEYSTONE II 12 MILE & WEST PARK | NOVI, MICHIGAN

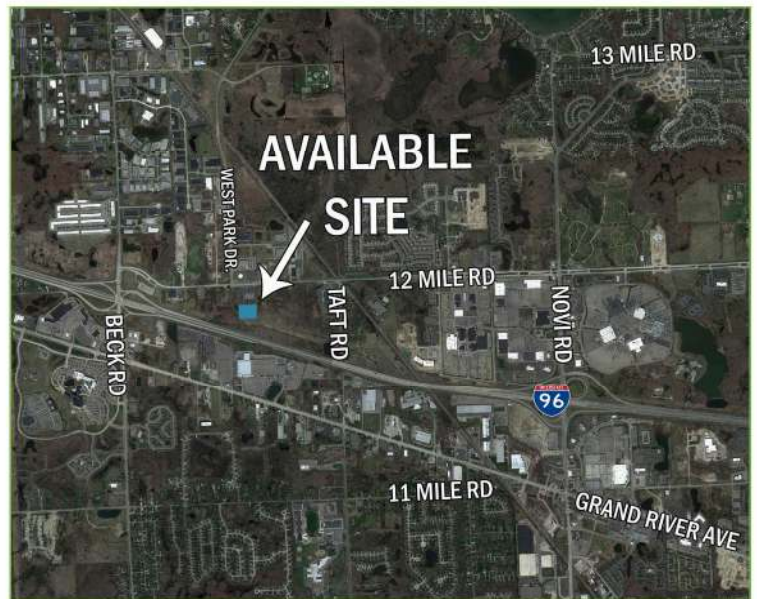
FOR SALE OR LEASE
35,000 - 45,000 +/- SF



NEW CONSTRUCTION BY GENERAL DEVELOPMENT COMPANY

PROPERTY FEATURES

- Quick access to I-96, I-696, I-275, M-5
- For Research, Office, and Light Industrial
- Zoning - OST
- Approximately 228 parking spaces



BRUCE BRICKMAN
(248) 357.3777 (office)
bruceb@gendev.com

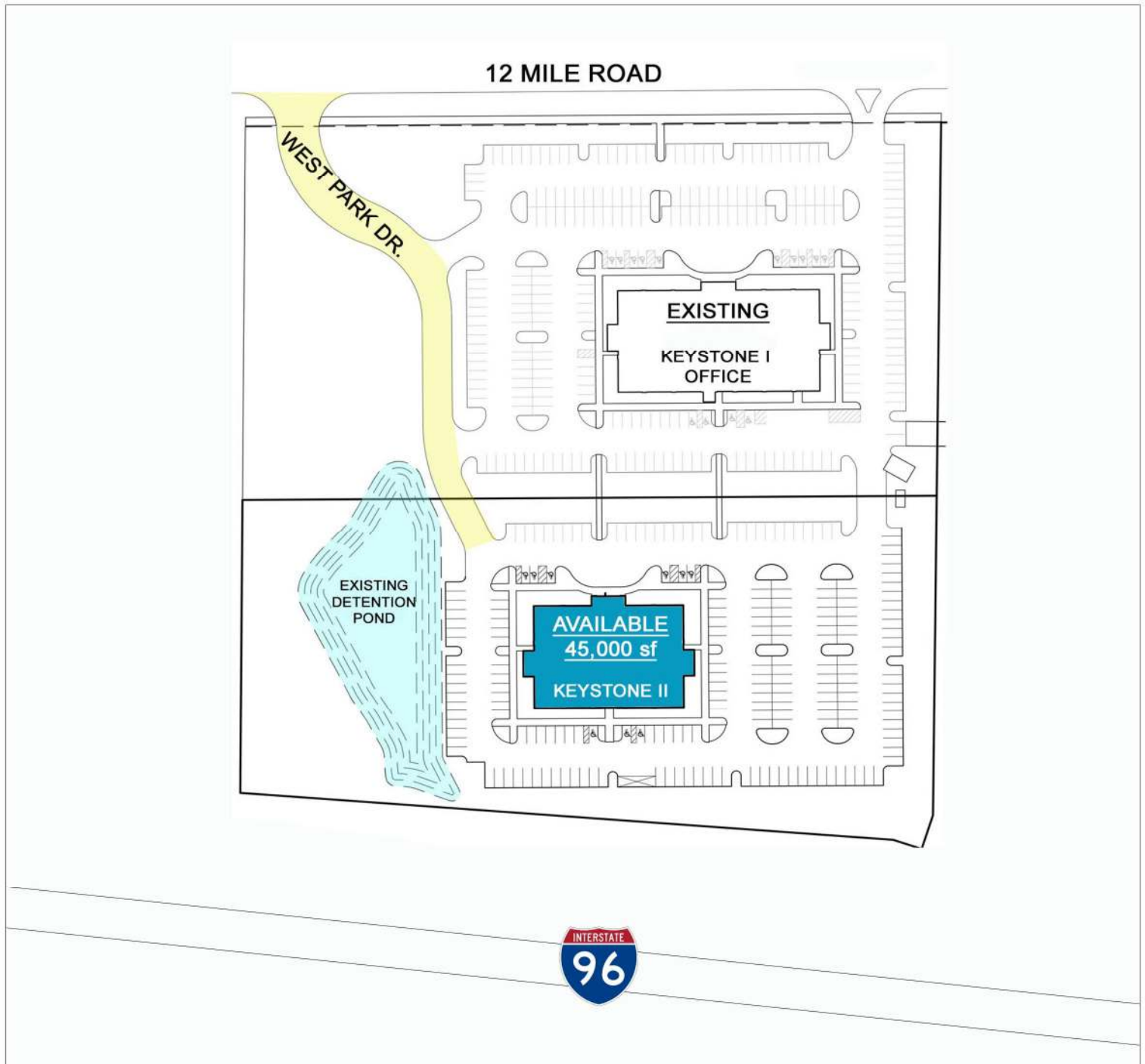
ETHAN WEISMAN
(248) 514.1169 (cell)
ethanw@gendev.com

We have no reason to doubt the accuracy of information contained herein, but we cannot guarantee it. All information should be verified prior to purchase and/or lease

**GENERAL
DEVELOPMENT
COMPANY**

www.gendev.com

KEYSTONE II 12 MILE & WEST PARK | NOVI, MICHIGAN



BRUCE BRICKMAN
(248) 357.3777 (office)
bruceb@gendev.com

ETHAN WEISMAN
(248) 514.1169 (cell)
ethanw@gendev.com

We have no reason to doubt the accuracy of information contained herein, but we cannot guarantee it. All information should be verified prior to purchase and/or lease



www.gendev.com