

FOR SALE/LEASE

75 ACRES - ECORSE ROAD
VAN BUREN TOWNSHIP, MI 48111



UP TO 1,000,000 SF | VAN BUREN TOWNSHIP, MICHIGAN

PROPERTY FEATURES:

- Build-to-suit: 200,000 to 1,000,000 SF
- 75-acre opportunity zone site
- Zoned M-2 General Industrial; Permitted uses include research and development, manufacturing, warehousing, and logistics
- Adjacent to Willow Run Airport, the American Center for Mobility, the future Subaru Tech Center to be completed 2021, and the GM Willow Run Distribution Center
- Direct access to US-12/Michigan Avenue, I-94, and I-275
- 30 minute drive or less to Ann Arbor, Downtown Detroit, the Ambassador Bridge, the future Gordie Howe International Bridge, and Detroit Metro Airport
- Norfolk Southern Rail access
- All brokers protected



FOR MORE INFORMATION PLEASE CONTACT:

STACY FIELDS
stacyf@gendev.com

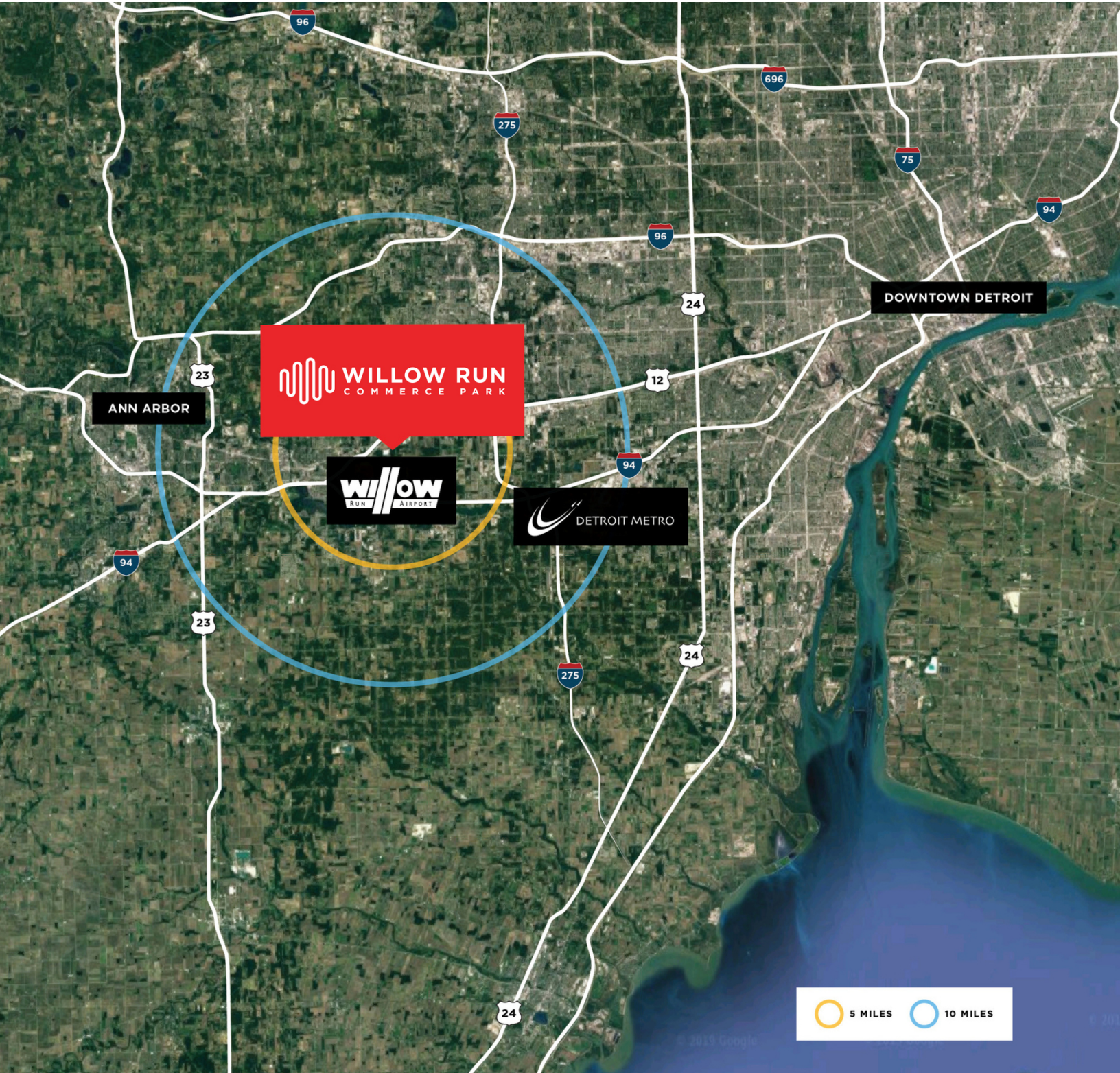
248.227.5000



The information provided herein along with any attachment(s) was obtained from sources believed to be reliable, however, Friedman Real Estate makes no guarantees, warranties, or representations as to the completeness or accuracy of such information and legal counsel is advised. All information provided is subject to verification and no liability for reliance on such information or errors or omissions is assumed. The presentation of this property is submitted subject to errors, omissions, change of price or conditions, prior sale or lease, or withdrawal without notice. Copyright © 2019 Friedman Real Estate. All rights reserved.

FOR SALE/LEASE

75 ACRES - ECORSE ROAD
VAN BUREN TOWNSHIP, MI 48111



FOR MORE INFORMATION PLEASE CONTACT:

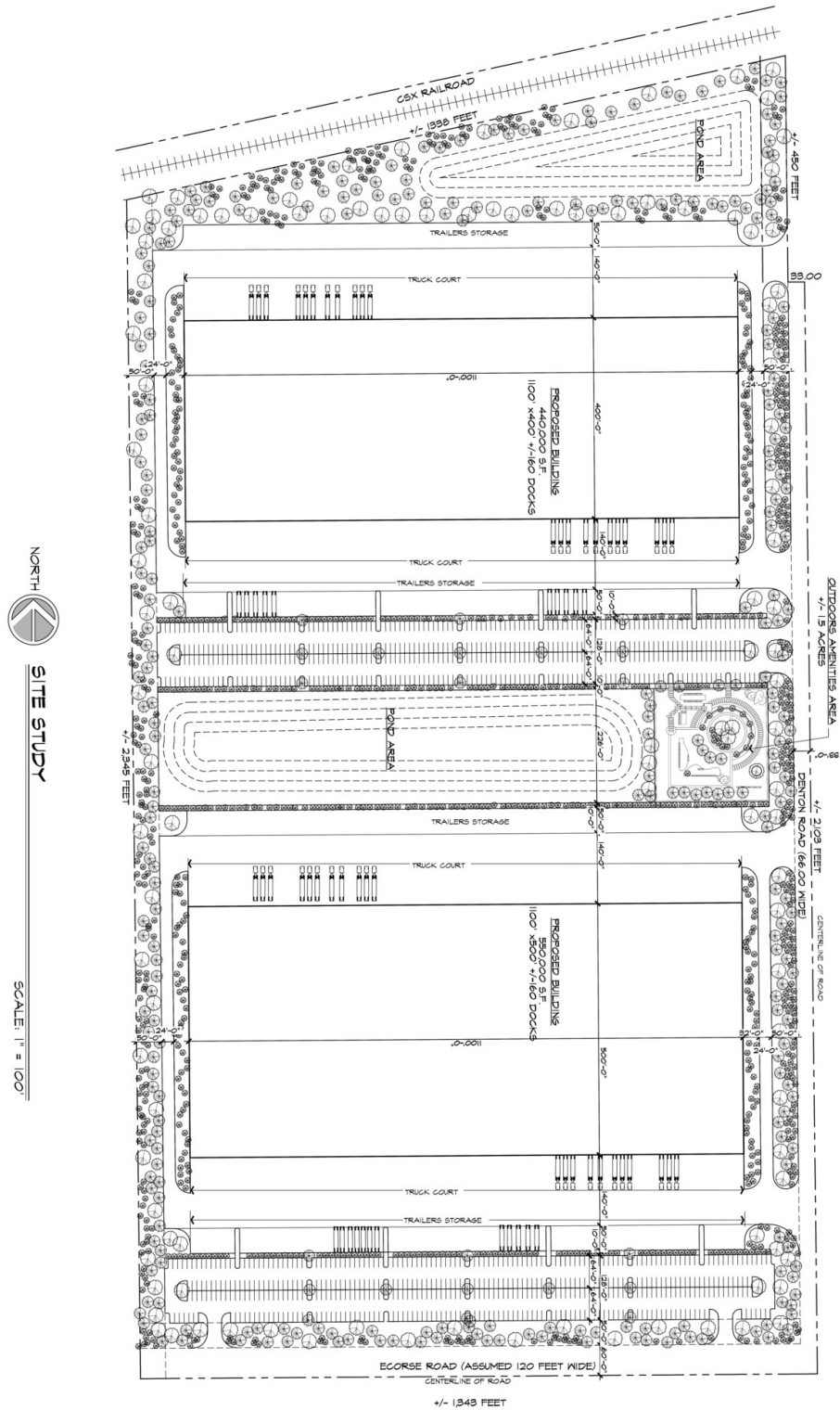
STACY FIELDS stacyf@gendev.com

248.227.5000



FOR SALE/LEASE

75 ACRES - ECORSE ROAD
VAN BUREN TOWNSHIP, MI 48111



FOR MORE INFORMATION PLEASE CONTACT:

STACY FIELDS stacyf@gendev.com

248.227.5000

