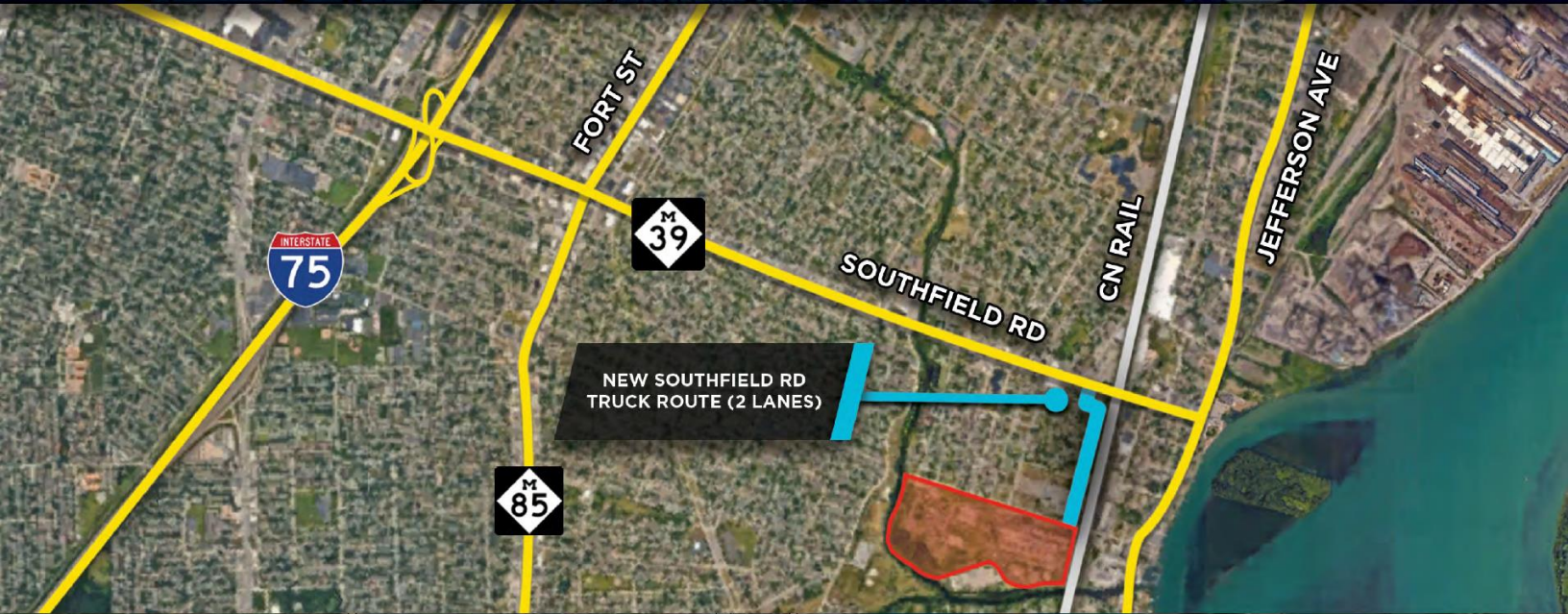


NEW BUILD-TO-SUIT, FOR SALE OR LEASE

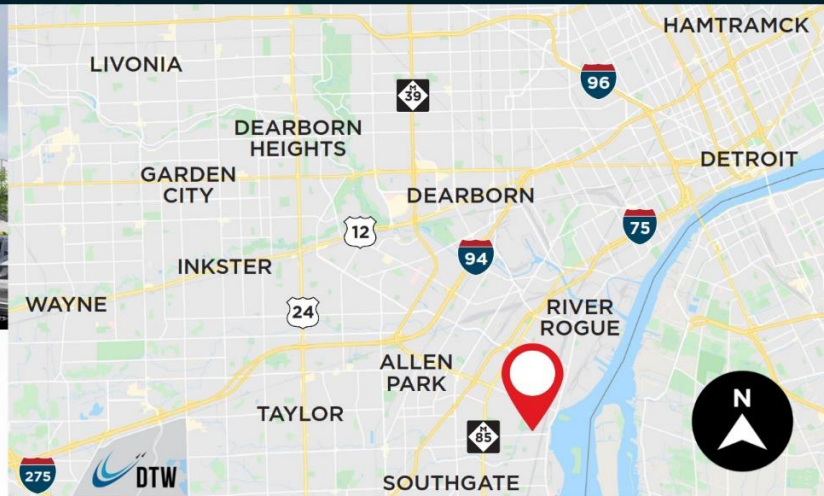
66 Acres – W Jefferson Avenue & Mill Street, Ecorse, Michigan



MILL STREET LOGISTICS



UP TO 900,000 SF | ECORSE, MICHIGAN



PROPERTY FEATURES

- Build-to-suit: 100,000 SF-900,000 SF
- 66 acre infill site fast-tracked for development by the City of Ecorse and State of Michigan
- Within 10 miles of 300,000 households and 700,000 residents
- Strategically located for logistics: 1.5 miles to I-75, 4 miles to I-94, 7 miles to the future Gordie Howe International Bridge, 9 miles to the Ambassador Bridge, 12 miles to Detroit Metro Airport, direct access to M-39/Southfield Freeway leading to all major freeways
- Close proximity to Ford, GM, FCA and major supplier operations facilities
- Zoned Industrial; Permitted uses include wholesale activities, warehousing, logistics, industrial operations
- Water, sewer, and electric available at the site
- Canadian National Railway access
- All Brokers Protected

FOR MORE INFORMATION PLEASE CONTACT:

BRUCE BRICKMAN
(248) 357.3777 (office)
bruceb@gendev.com

ETHAN WEISMAN
(248) 514-1169 (cell)
ethanw@gendev.com

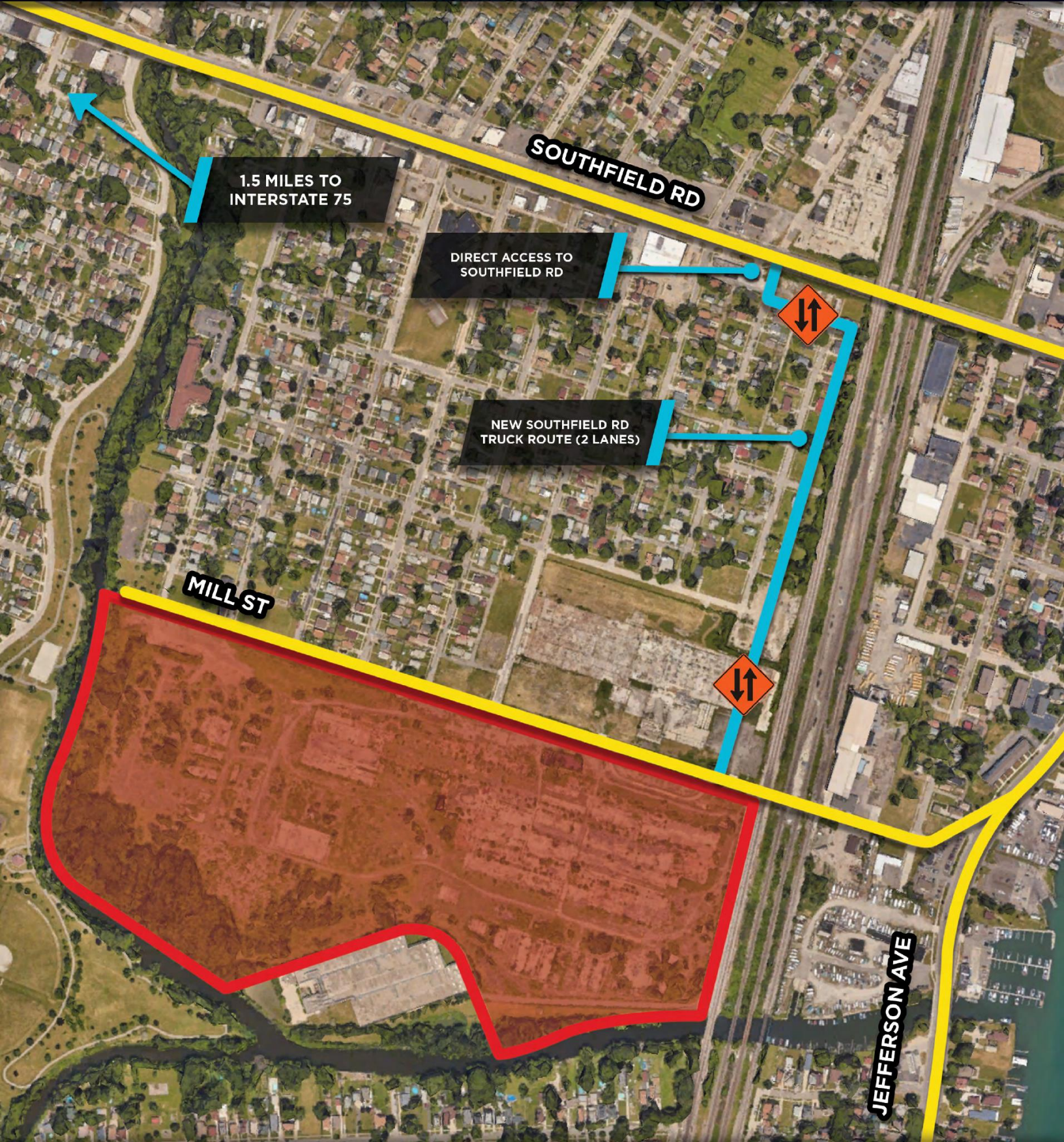


NEW BUILD-TO-SUIT, FOR SALE OR LEASE

66 Acres – W Jefferson Avenue & Mill Street, Ecorse, Michigan



**MILL STREET
LOGISTICS**



NEW BUILD-TO-SUIT, FOR SALE OR LEASE

66 Acres - W Jefferson Avenue & Mill Street, Ecorse, Michigan



MILL STREET LOGISTICS

FREEWAY ACCESS



MAJOR CITIES WITHIN A 250 MILE RADIUS

